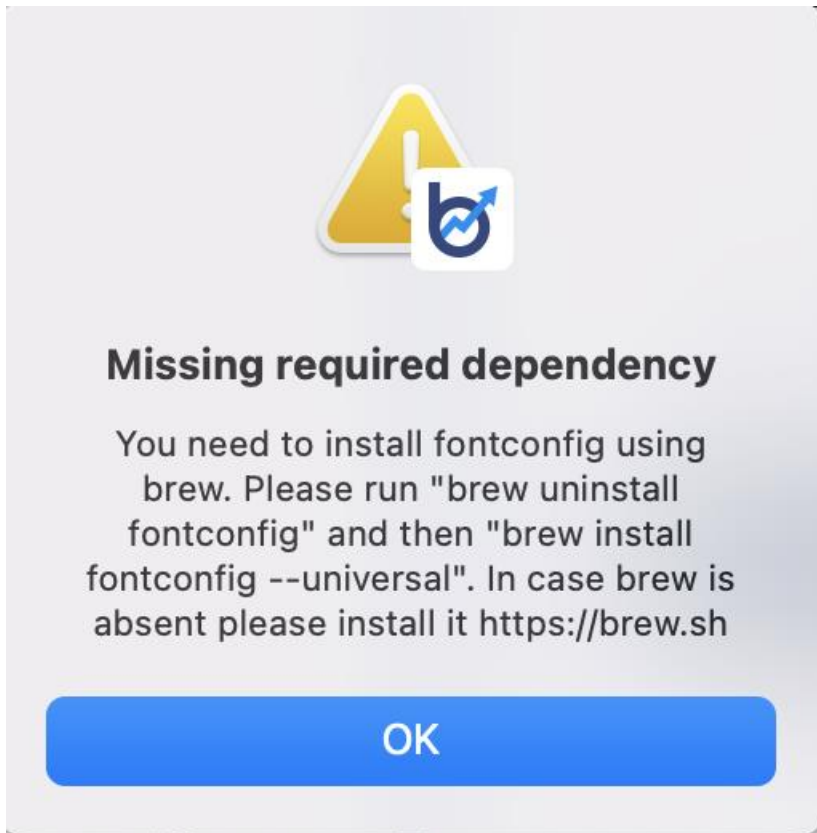


When you launch the application you may see a message below



This is because you need to install fontconfig. You can follow the instructions at <https://brew.sh> to install brew which is the package manager for Mac OS. Once brew (home brew) is installed, you can install fontconfig by running following from a terminal window “brew uninstall fontconfig” and then “brew install fontconfig --universal”.

NOTE: All the instructions at <https://brew.sh> require you to open a terminal window. You can do this on a Mac by pressing Command + Space and type **terminal** and press **Enter/Return** key.