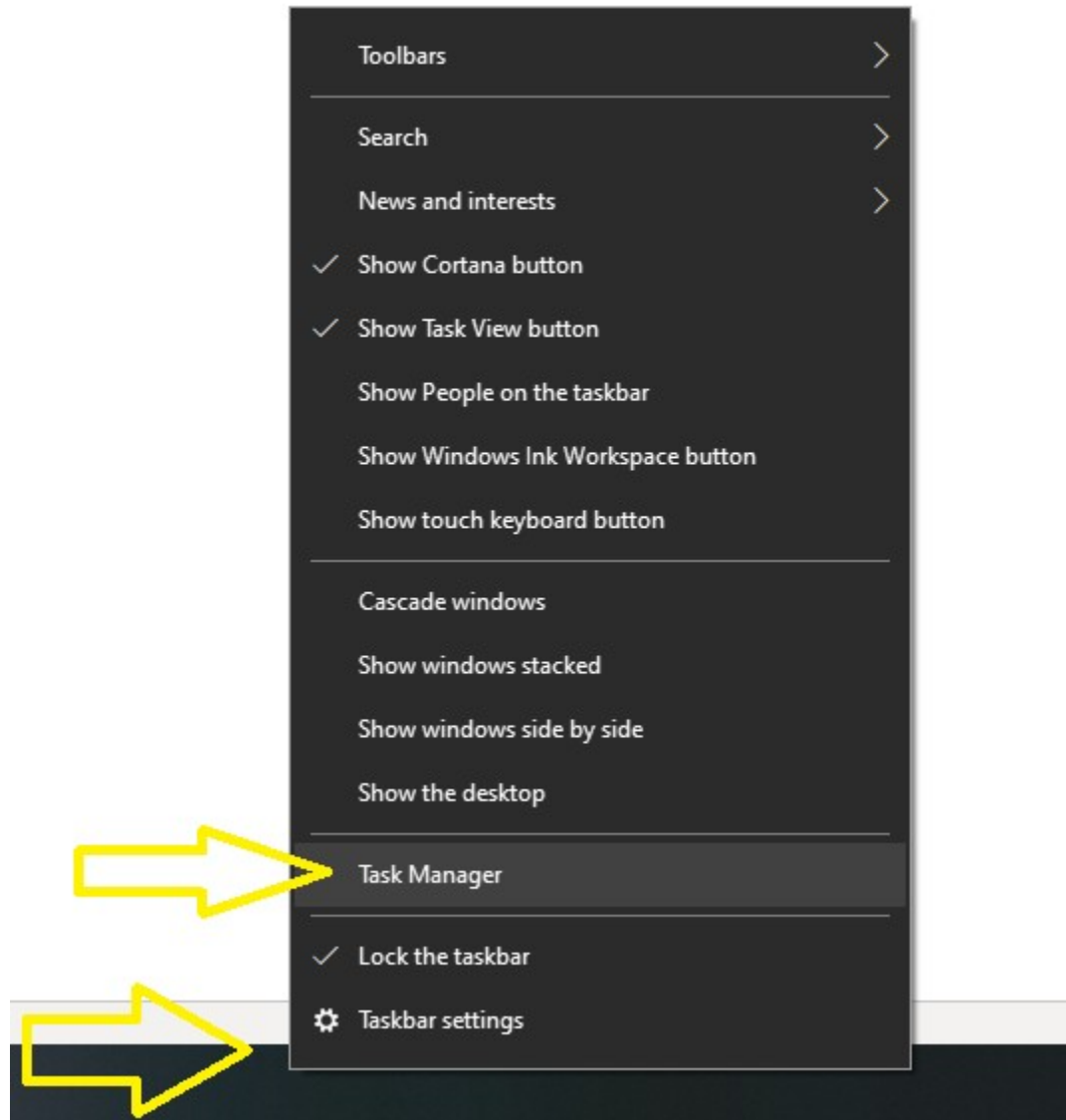
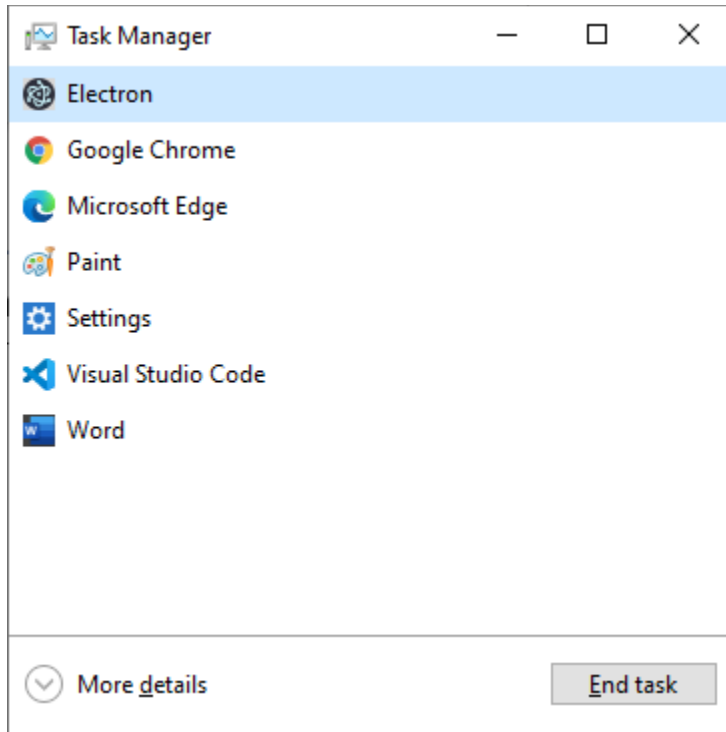


## Setting the path to the R executable to address the issue where the application does not launch

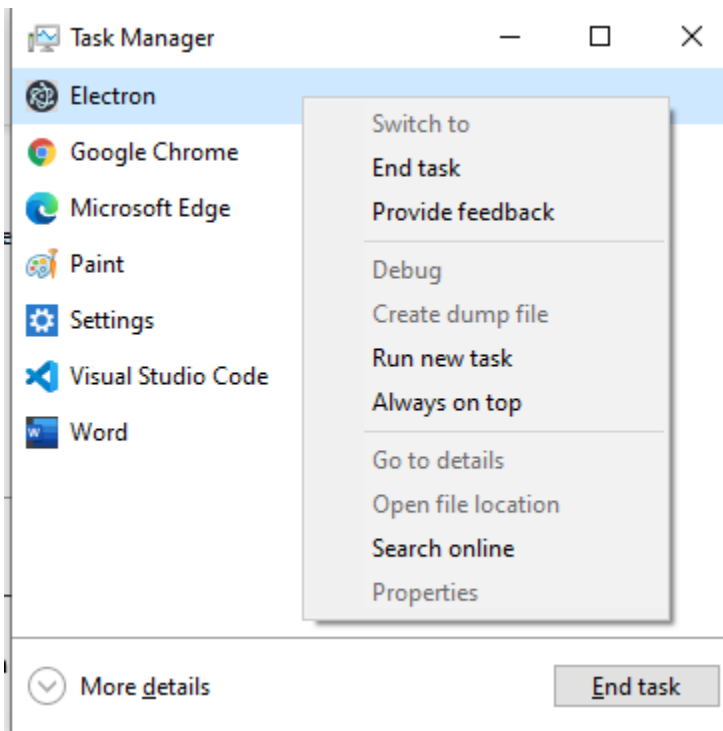
1. Delete all instances of the BlueSky Statistics 10 application by following steps a through c below.
  - a. Run Task Manager by right clicking on the side bar as shown in the screen below. Click on Task Manager



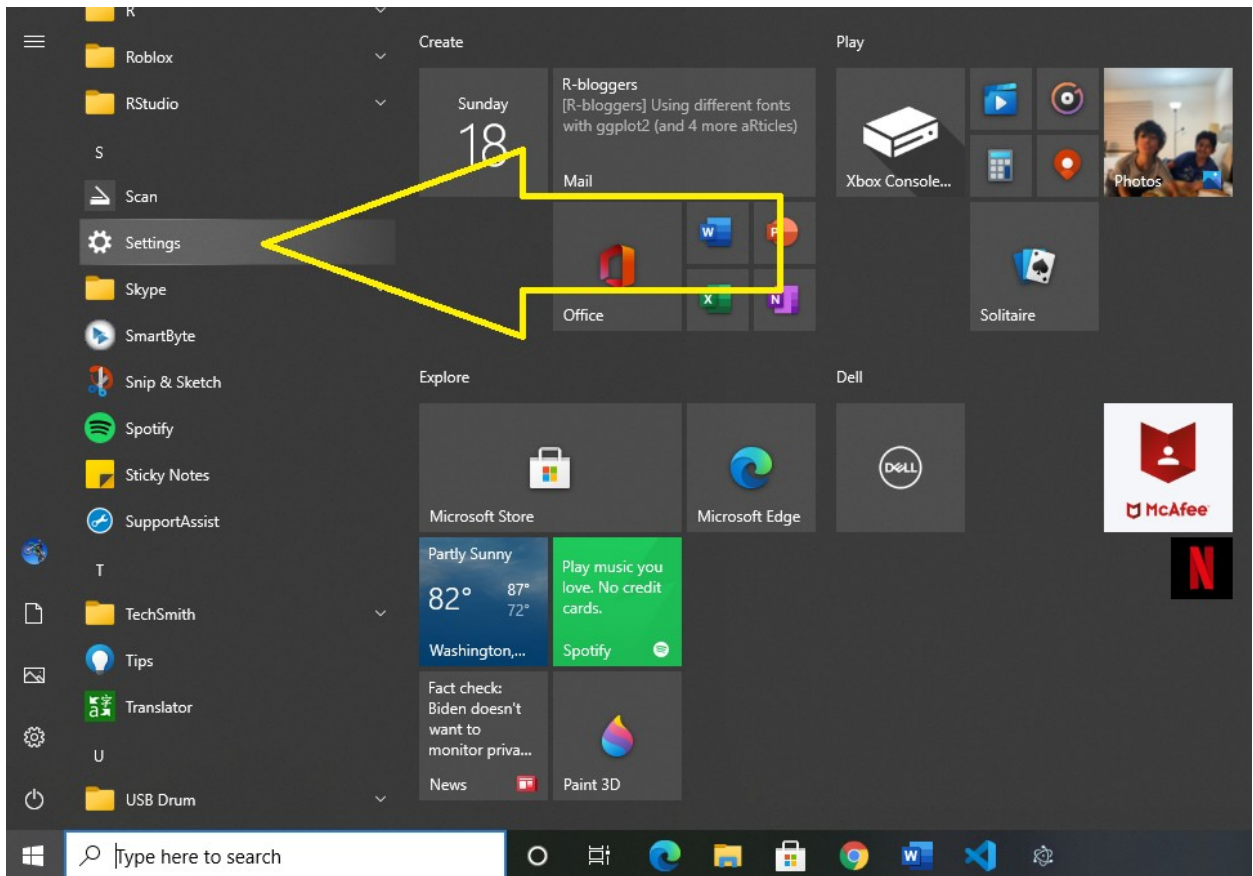
- b. You will see the screen below. If you don't see electron, proceed to step 2.



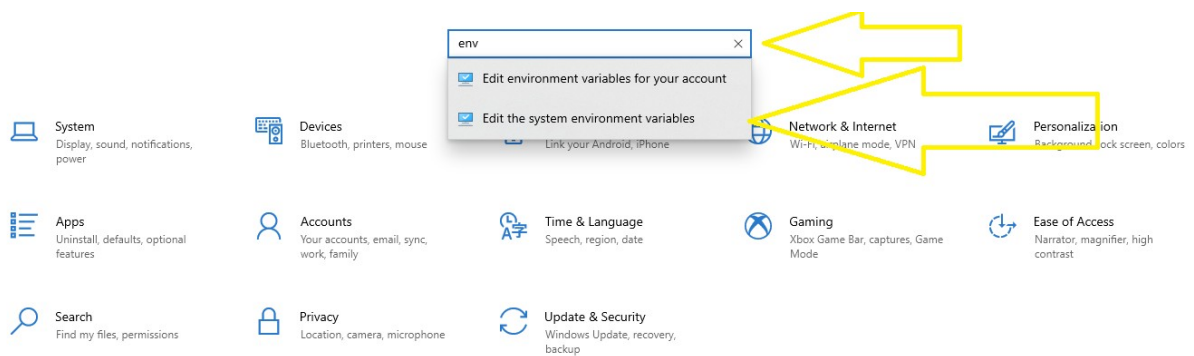
c. Right click on Electron and select End Task as below



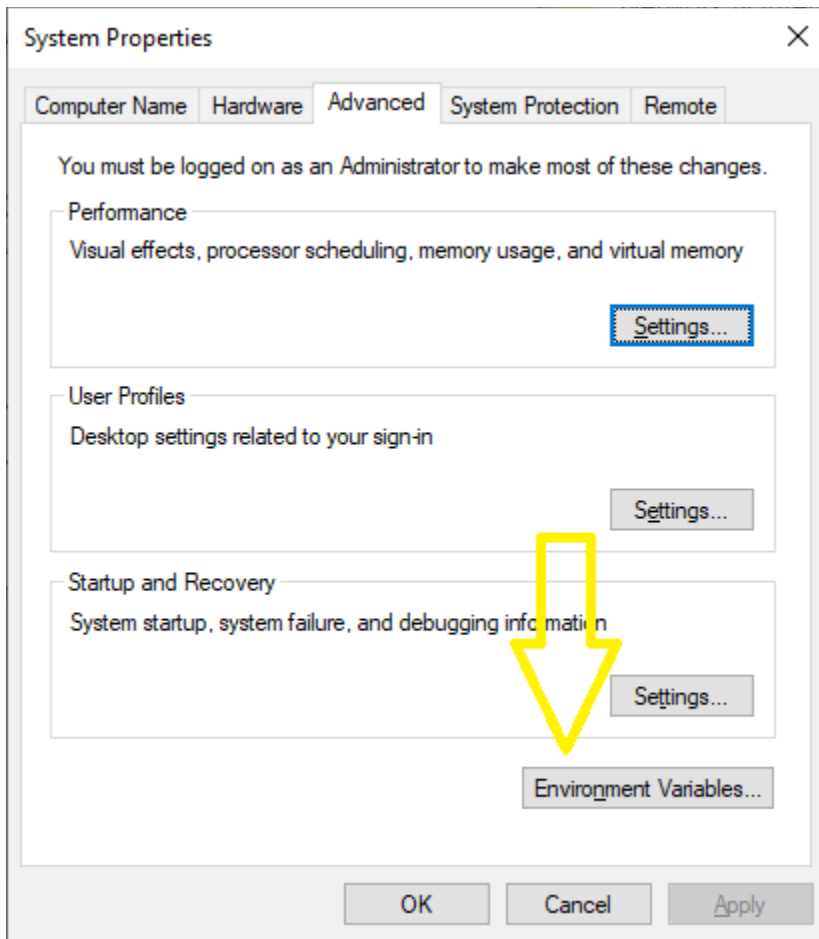
2. Select Settings from the windows start menu bar



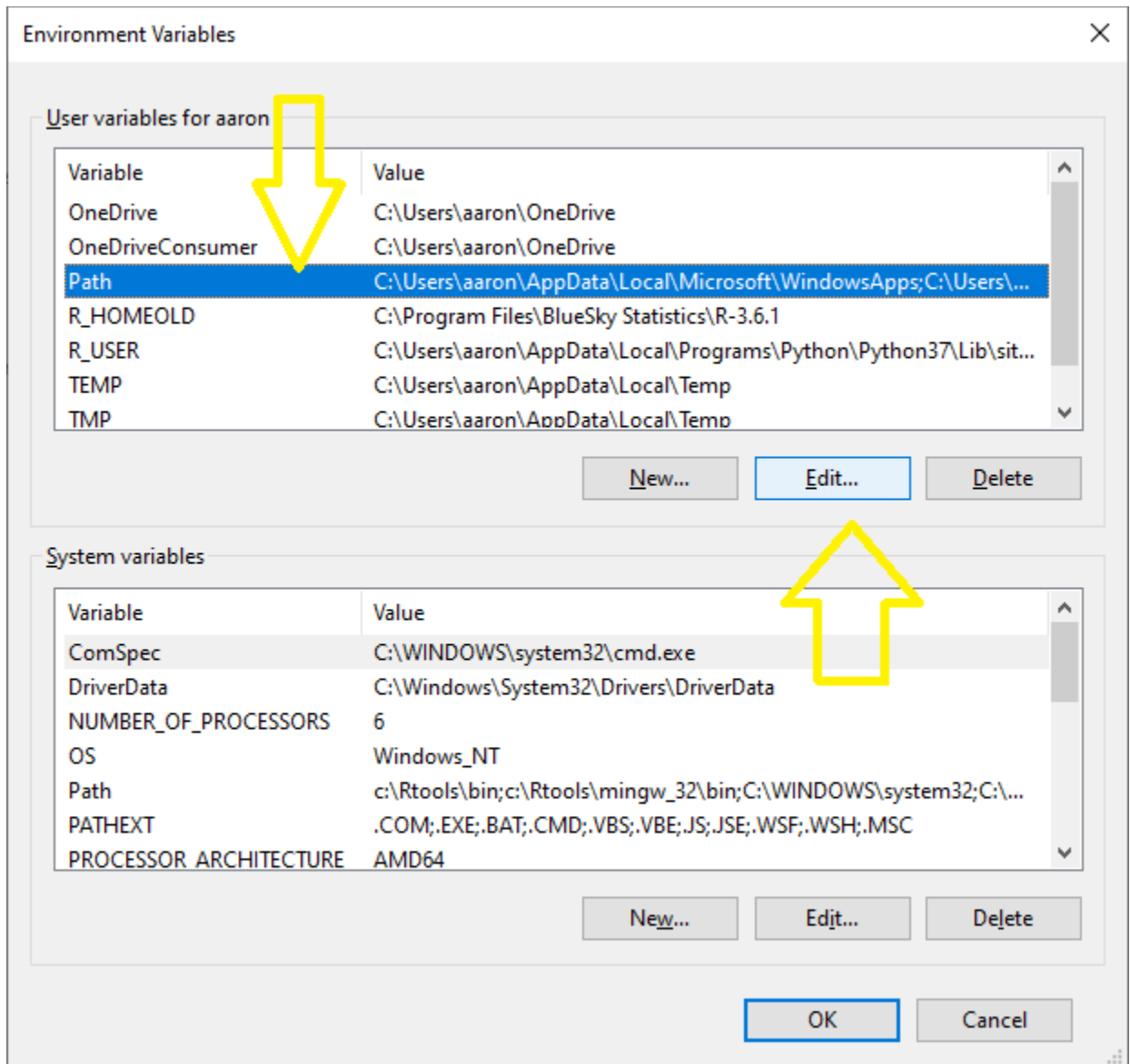
3. Type in “env” and select “Edit system environment variables” as below



4. You will see the screen below. Click environment variables.



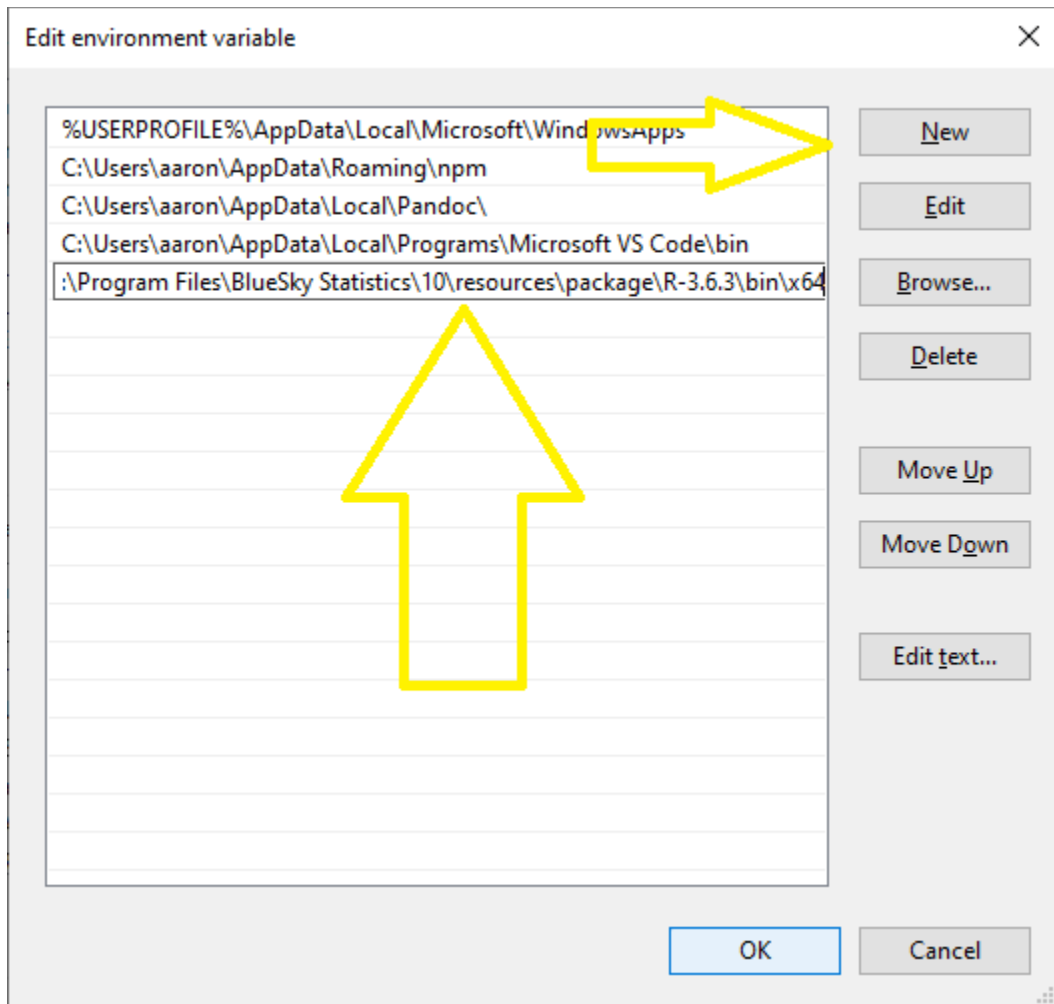
5. You will see the screen below. Click on Path and select Edit



6. You will see the screen below. Click New and type in the path as below

**C:\Program Files\BlueSky Statistics\10**resources\package\R-3.6.3\bin\x64

Note: **C:\Program Files\BlueSky Statistics\10** is the base path and is dependent on the path you selected to install BlueSky Statistics. This may be different on your machine, so please verify the path before you type it in.



7. Click OK on all the dialog above, there are 2 others dialogs to click OK on and you should be good.
8. Launch BlueSky Statistics 10