

# Installing R package(s) in BlueSky Statistics

# 1. Installing BlueSky R package

- Launch BlueSky Statistics.
- Go to 'Tools -> Package -> Update BlueSky package from zip(Restart App)'.
- See screen below.

BlueSky Statistics (Open Source Desktop Edition, Ver- 5.40)

File Data Analysis Graphics Model Fitting Model Tuning Model Statistics Output History Tools Help Score Current Dataset

New Open Save Refresh

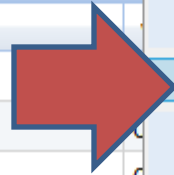
Icons for search, calculator, grid, graph, network, and navigation.

Inspect Dialog  
Dialog Installer...  
Package  
Configuration Settings

Pick a Model:  
Score  
Load Model

Dataset1 (Dataset1)

	var1					var5	var6
1	0					0	0
2	0					0	0
3	0					0	0
4	0					0	0
5	0					0	0
6	0					0	0
7	0					0	0
8	0	0	0	0	0	0	0

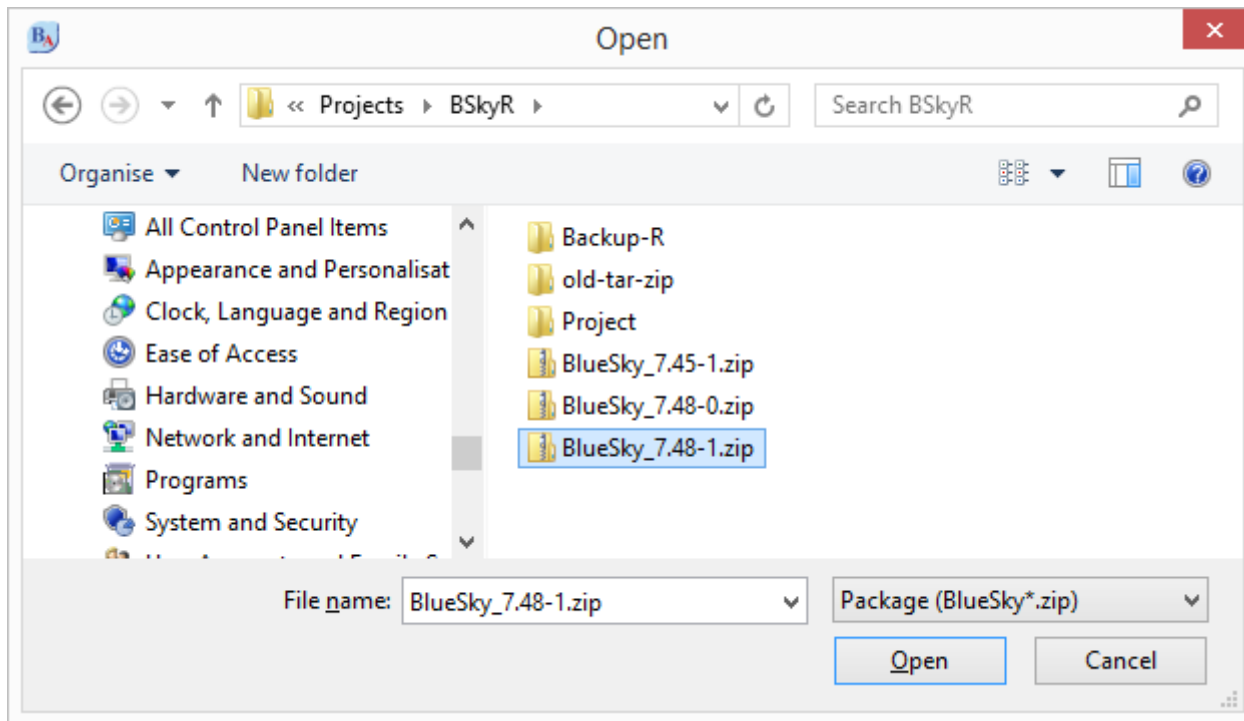


- R version details
- R Package Details
- Show installed packages
- Show currently loaded packages
- Update BlueSky package from zip (Restart App)
- Install package(s) from zipped file(s)
- Install/Update package(s) from CRAN
- Load package(s)
- Load user session package(s)
- Unload package(s)
- Uninstall package(s)

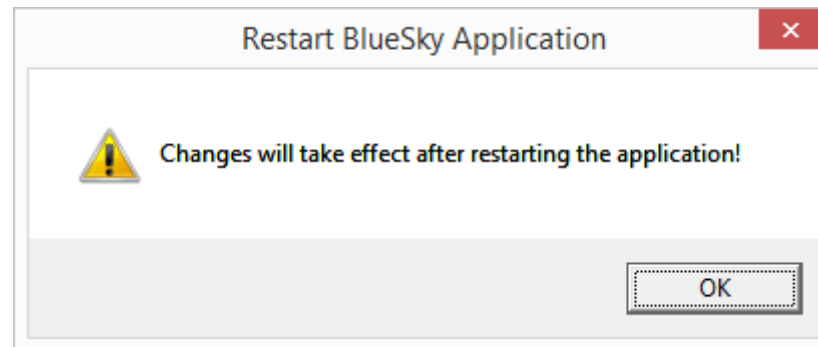
Data Variables

There is only one page. Use the scrollbar if available under the data grid to see all columns.

Following 'Open' dialog will appear. Locate BlueSky R package and click 'Open'. See below.



For changes to take effect, you need to close BlueSky Statistics and then relaunch it.



## 2. Installing/Updating R package(s) from CRAN

- Launch BlueSky Statistics
- Go to 'Tools -> Package -> Install/Update package(s) from CRAN'.
- See screen below.

BlueSky Statistics (Open Source Desktop Edition, Ver- 5.40)

File Data Analysis Graphics Model Fitting Model Tuning Model Statistics Output History Tools Help Score Current Dataset

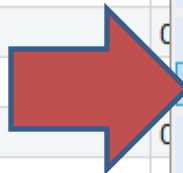
New Open Save Refresh

Inspect Dialog  
Dialog Installer...  
Package  
Configuration Settings

Select a Model:  
Score  
Load Model

Dataset1 (Dataset1)

	var1					var5	var6
1	0	0				0	0
2	0	0				0	0
3	0	0				0	0
4	0	0				0	0
5	0	0				0	0
6	0	0				0	0
7	0	0				0	0
8	0	0	0	0	0	0	0

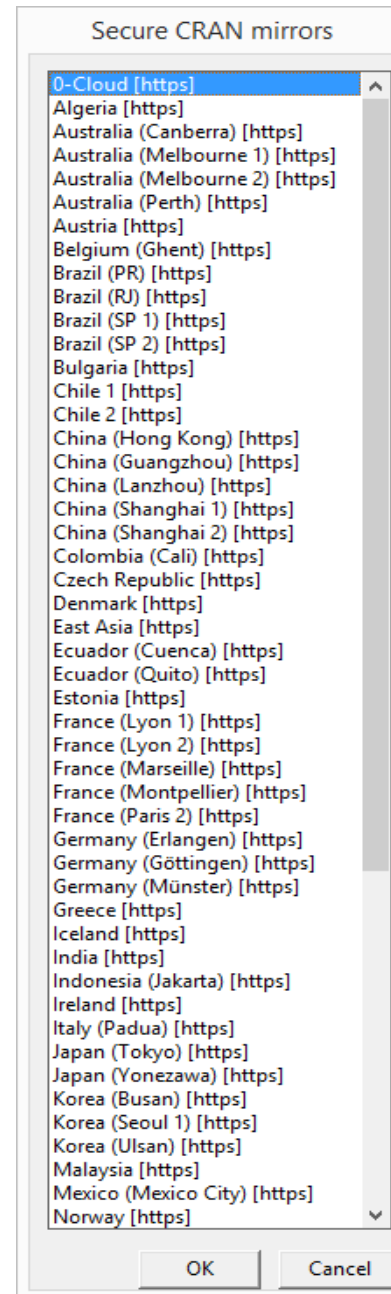


- R version details
- R Package Details
- Show installed packages
- Show currently loaded packages
- Update BlueSky package from zip (Restart App)
- Install package(s) from zipped file(s)
- Install/Update package(s) from CRAN
- Load package(s)
- Load user session package(s)
- Unload package(s)
- Uninstall package(s)

Data Variables

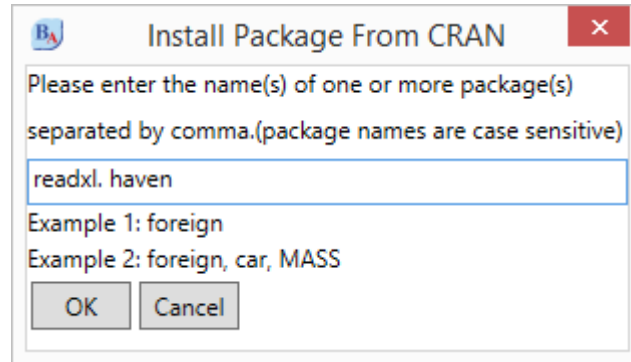
There is only one page. Use the scrollbar if available under the data grid to see all columns. << >>

Choose you CRAN mirror and click OK





Following dialog will appear. Enter single R package name or multiple R package names separated by a comma, and click OK



This may take a while depending on your internet speed and number of R packages you want to install(or update). Wait till you see a success or failure message in the 'Output Window' as shown below.

Ouput and Syntax Window-1 (Active)

Results of Analysis


File Edit Layout Data Analysis Graphics Model Fitting Model Tuning Model Statistics History Image Size

Compute Binning Standardize Aggregate Merge Sort Summarize Cross Tab K Means Time Series Histogram Box Plot Scatter Plot Regression Plot

```
BSkyOpenNewDataset ( datasetName='Dataset1')
```

**Installing package(s) from CRAN**

```
install.packages(c('readxl', 'haven'))  
library(readxl)  
library(haven)
```



Thank you  
BlueSky Statistics  
[support@blueskystatistics.com](mailto:support@blueskystatistics.com)