



Install BlueSky Statistics

Open Source Edition

support@blueskystatistics.com



Prerequisites

- BlueSky Statistics open source edition is available for Windows 64 bit as well as 32 bit.
- .NET version 4.5.1 and above.



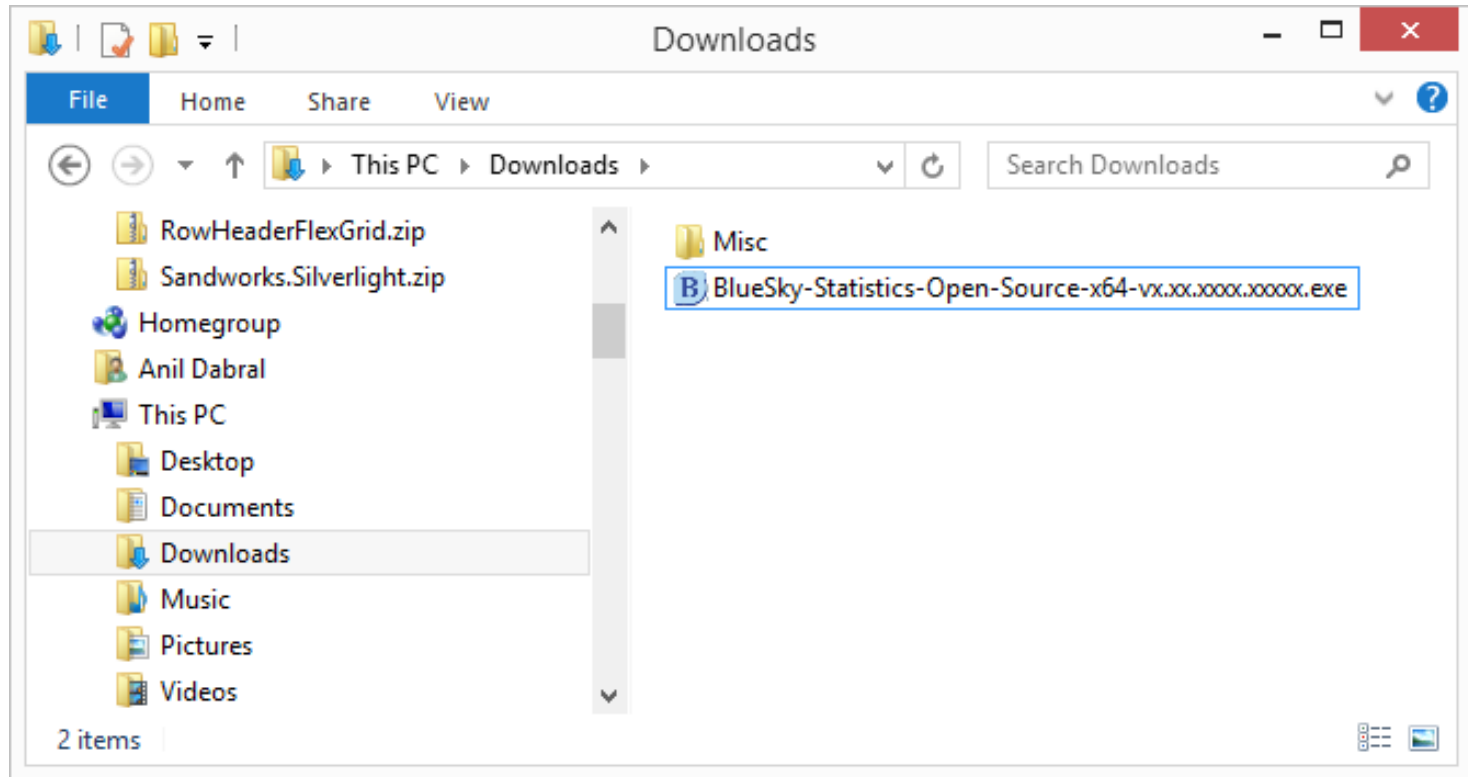


Installing BlueSky Statistics



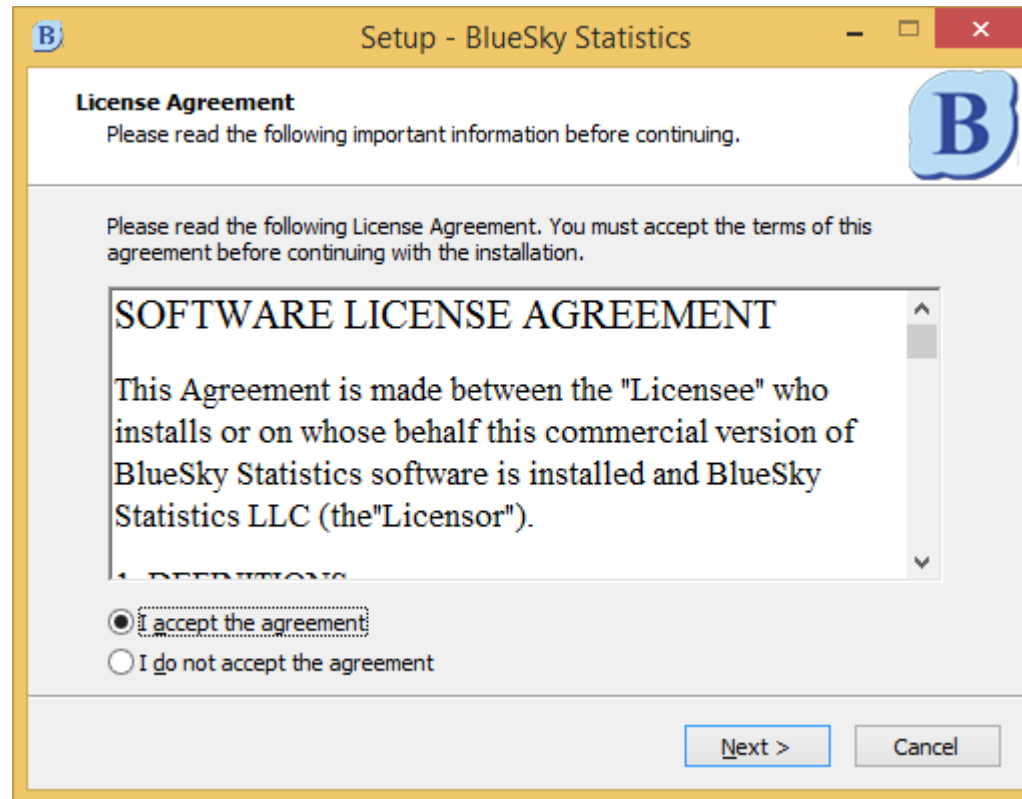
Install BlueSky Statistics

- To install the BlueSky Statistics, just double click the BlueSky Statistics setup file that you downloaded.



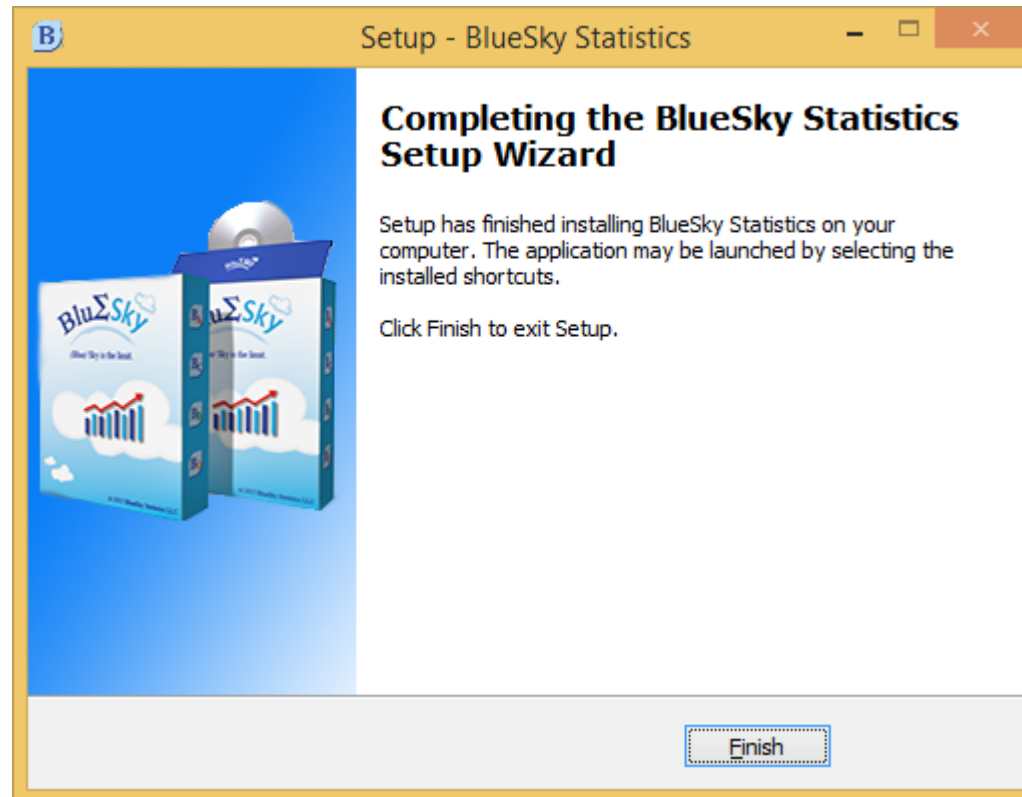
Install BlueSky Statistics

- The prompts are very straight forward and you can accept the defaults.



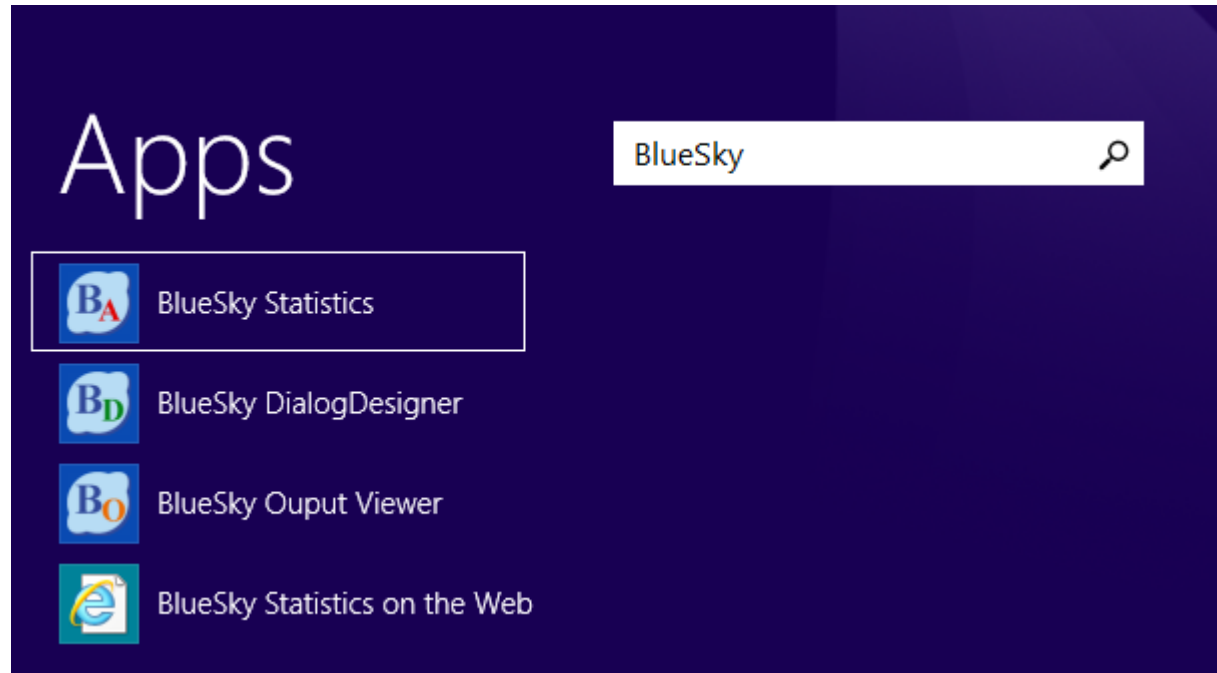
Install BlueSky Statistics

- Click Finish and the install will complete.



Launch the BlueSky Statistics application

- The folder BlueSky Statistics will be found in the start menu or desktop icons.
- On windows 8.1 or Windows 10 you can type in BlueSky in application finder.



Window 8.1

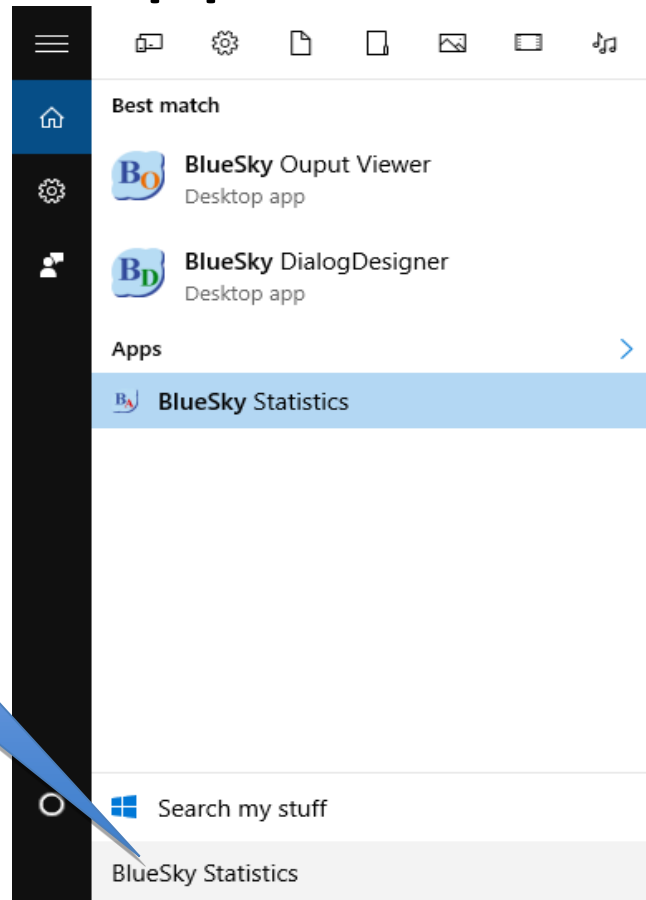
Launch the BlueSky Statistics application

The default path to the executable is

–C:\Program Files\BlueSky Statistics\BlueSky.exe



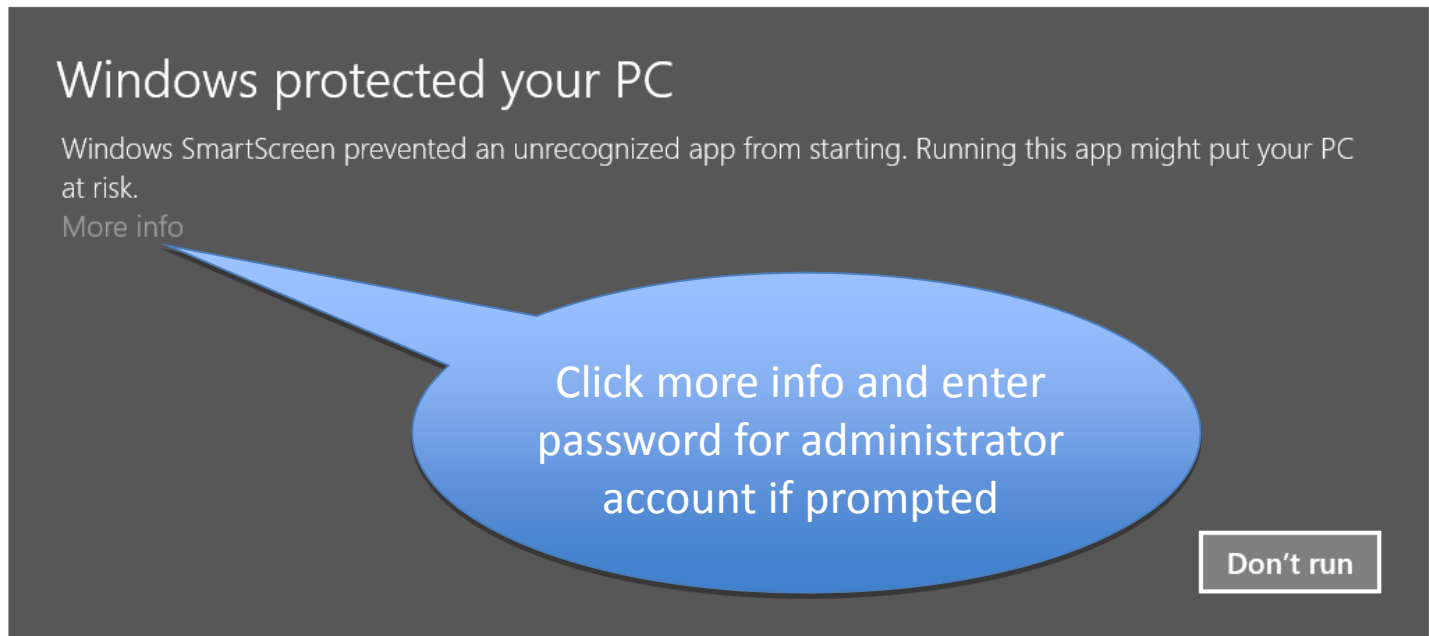
Launch the BlueSky Statistics application



Type in BlueSky Statistics in the search box.



On Windows 8.1 security **MAY** try and prevent the installer with the following screen



Click more info and you will be prompted to enter an administrator password. The install will then proceed.

You will then see the screen below

The screenshot displays the BlueSky Statistics software interface. The title bar reads "BlueSky Statistics (Open Source Desktop Edition. Ver- x.xx)". The menu bar includes "File", "Data", "Analysis", "Graphics", "Model Fitting", "Model Tuning", "Model Statistics", "Output", "History", "Tools", and "Help". The toolbar contains icons for "New", "Open", "Save", "Refresh", "Find", "Compute", "Binning", "Standardize", "Aggregate", "Merge", "Sort", "Summarize", "Cross Tab", "K Means", "Time Series", "Histogram", and "Box Plot". On the right, the "Score Current Dataset" panel shows "Model Type: All_Models" and "Pick a Model:" with a "Score" button. Below the toolbar, a tab labeled "Dataset1 (Dataset1)" is active. The main data grid has 8 rows and 6 columns, with all cells containing "NA". The columns are labeled "var1" through "var6". At the bottom left, there are "Data" and "Variables" buttons. At the bottom right, a message states: "There is only one page. Use the scrollbar if available under the data grid to see all columns." with navigation icons.

	var1	var2	var3	var4	var5	var6
1	NA	NA	NA	NA	NA	NA
2	NA	NA	NA	NA	NA	NA
3	NA	NA	NA	NA	NA	NA
4	NA	NA	NA	NA	NA	NA
5	NA	NA	NA	NA	NA	NA
6	NA	NA	NA	NA	NA	NA
7	NA	NA	NA	NA	NA	NA
8	NA	NA	NA	NA	NA	NA

Next steps

- Watch the video titled **Getting Started with BlueSky Statistics -Part 2: User Interface Basics** on the video gallery tab at <http://www.blueskystatistics.com/category-s/109.htm> (Direct link to video can be found on YouTube at https://youtu.be/_ryTYBOVgqw).





Thank You

- Email support@blueskystatistics.com with questions/comments

