



Install BlueSky Statistics

Commercial Edition

support@blueskystatistics.com



Prerequisites

- BlueSky Statistics commercial edition is currently available on Windows 64 bit
- .NET version 4.5.1 and above.



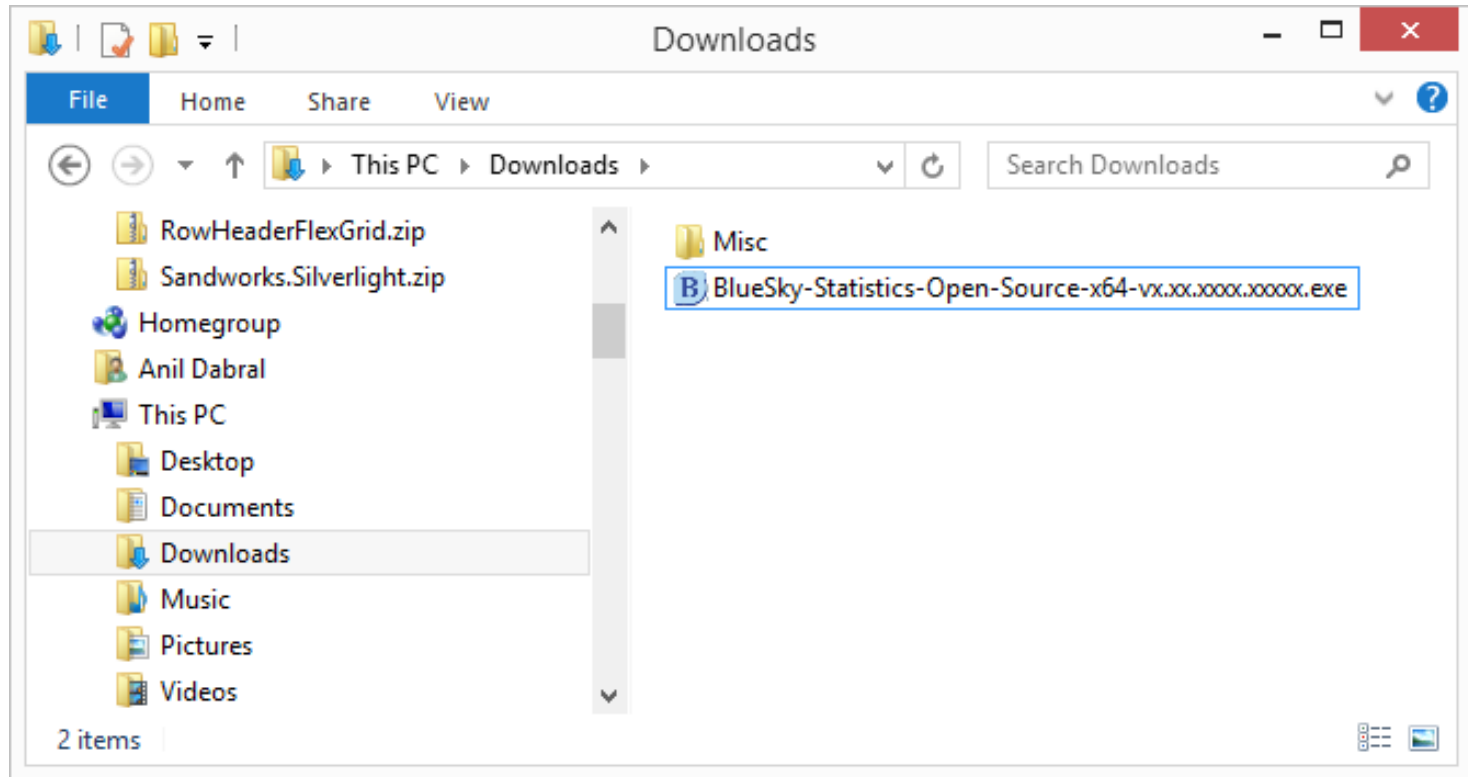


Installing BlueSky Statistics



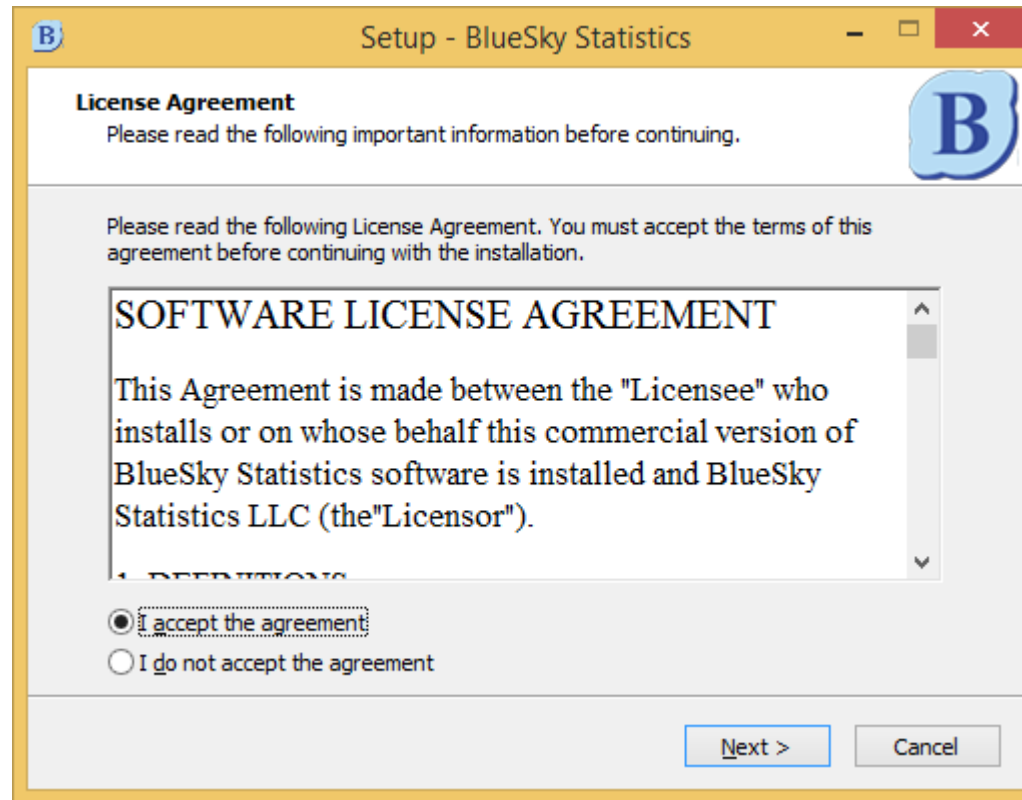
Install BlueSky Statistics

- To install the BlueSky Statistics, just double click the BlueSky Statistics setup file that you downloaded.



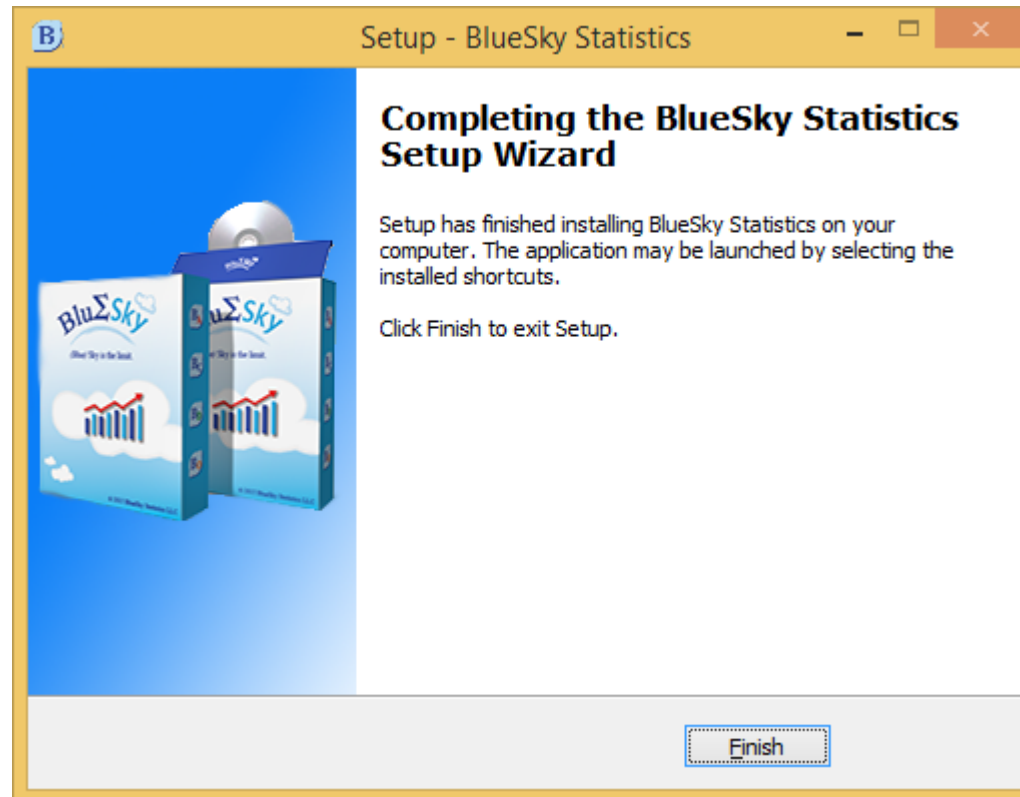
Install BlueSky Statistics

- The prompts are very straight forward and you can accept the defaults.



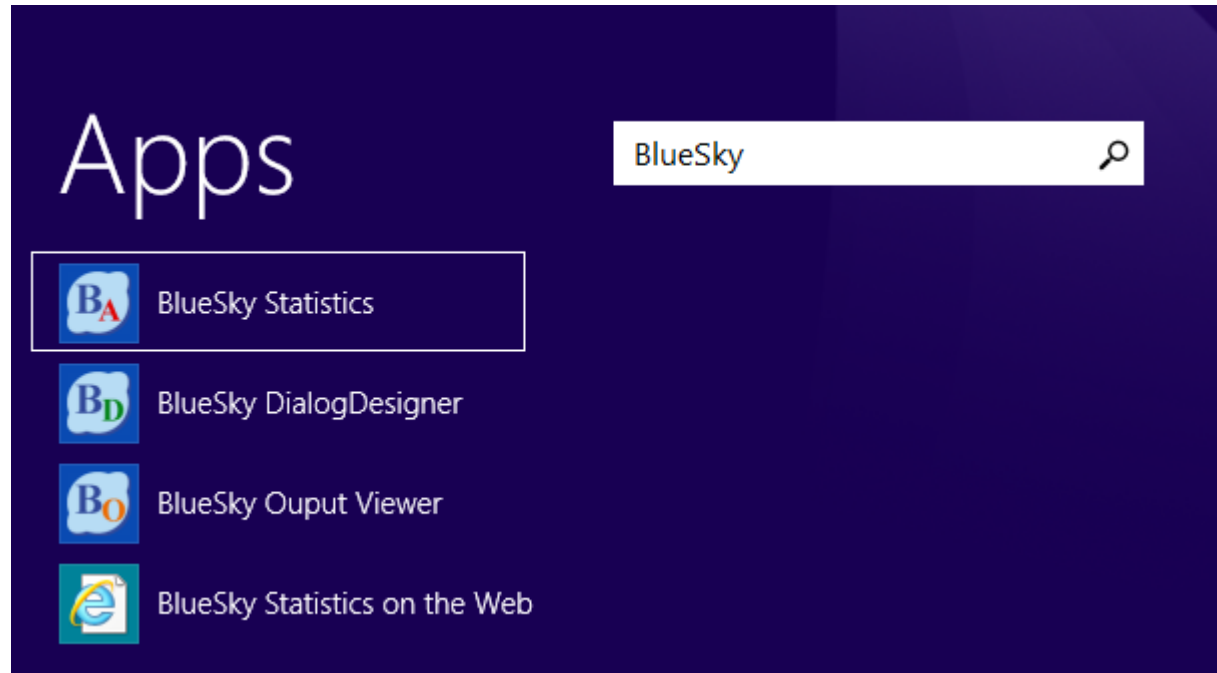
Install BlueSky Statistics

- Click Finish and the install will complete.



Launch the BlueSky Statistics application

- The folder BlueSky Statistics will be found in the start menu or desktop icons.
- On windows 8.1 or Windows 10 you can type in BlueSky in application finder.



Window 8.1

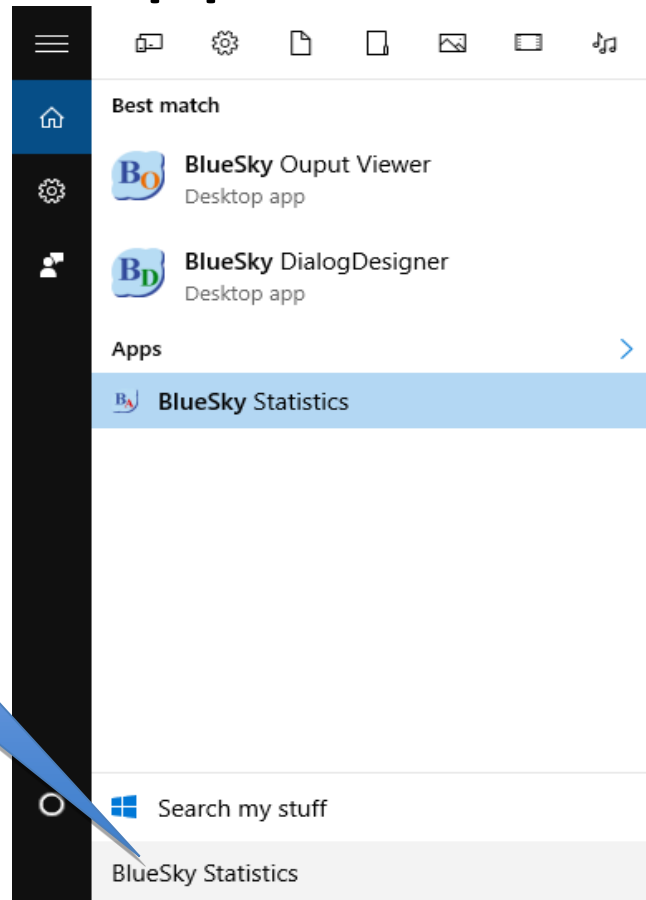
Launch the BlueSky Statistics application

The default path to the executable is

–C:\Program Files\BlueSky Statistics\BlueSky.exe



Launch the BlueSky Statistics application

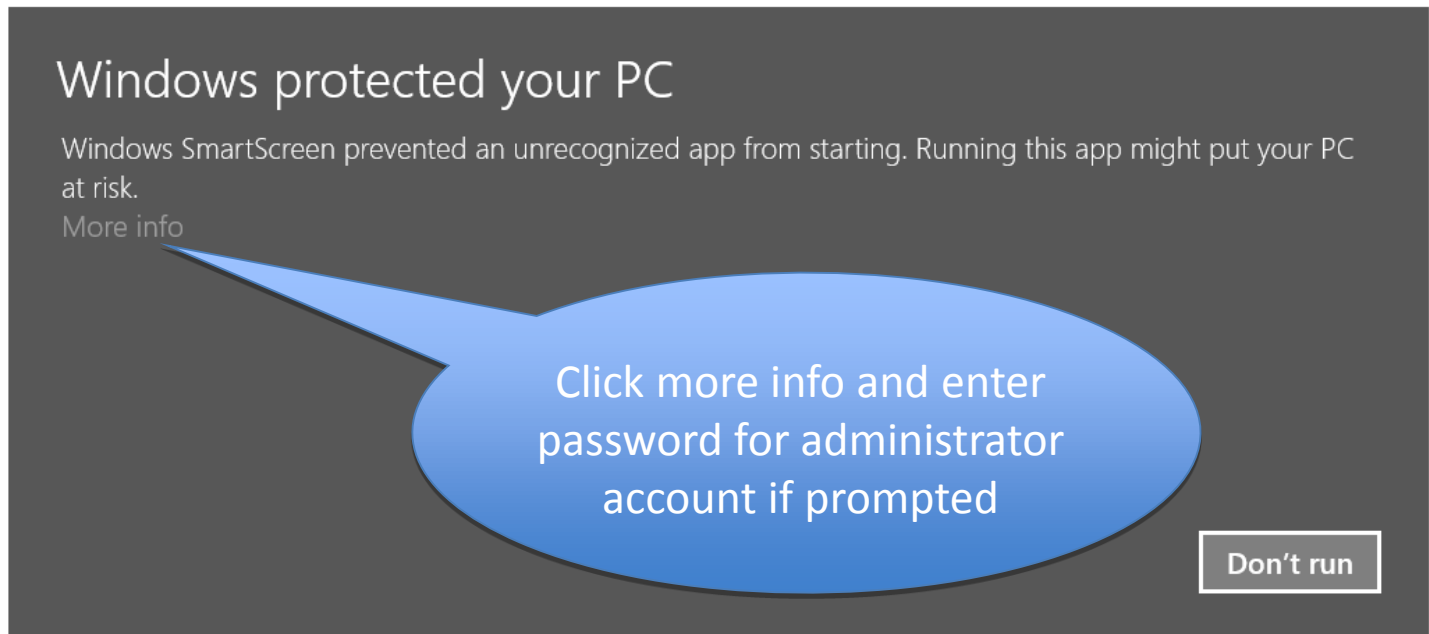


Type in BlueSky Statistics in the search box.

Windows 10

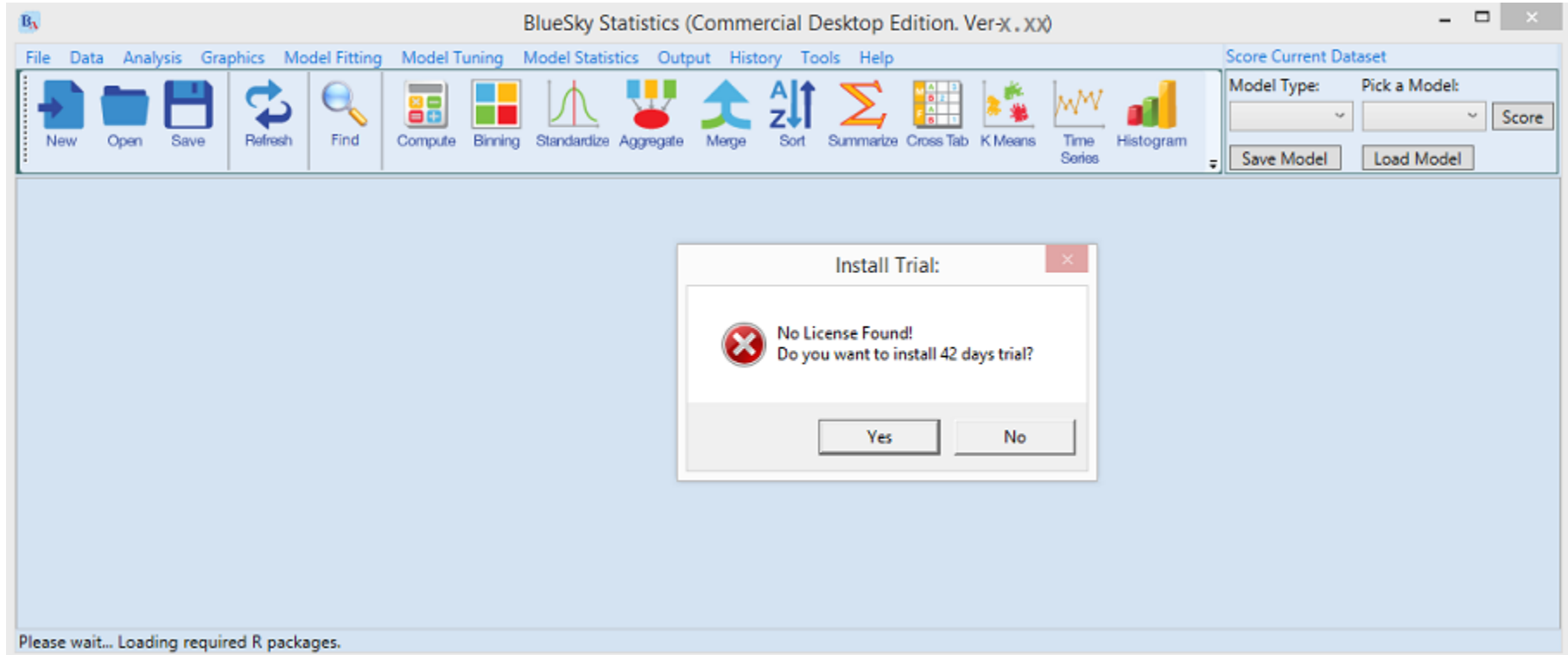


On Windows 8.1 security **MAY** try and prevent the installer with the following screen



We are working to resolve this with our certificate provider. Click more info and you will be prompted to enter an administrator password. The install will then proceed.

You will then see the screen below



Click Yes to start the 42 day trial

If you want to purchase a copy, go to

<http://www.blueskystatistics.com/product-p/bskylk.htm>



Next steps

- Watch the video titled **Getting Started with BlueSky Statistics -Part 2: User Interface Basics** on the video gallery tab at <http://www.blueskystatistics.com/category-s/109.htm> (Direct link to video can be found on YouTube at https://youtu.be/_ryTYBOVgqw).





Thank You

- Email support@blueskystatistics.com with questions/comments

