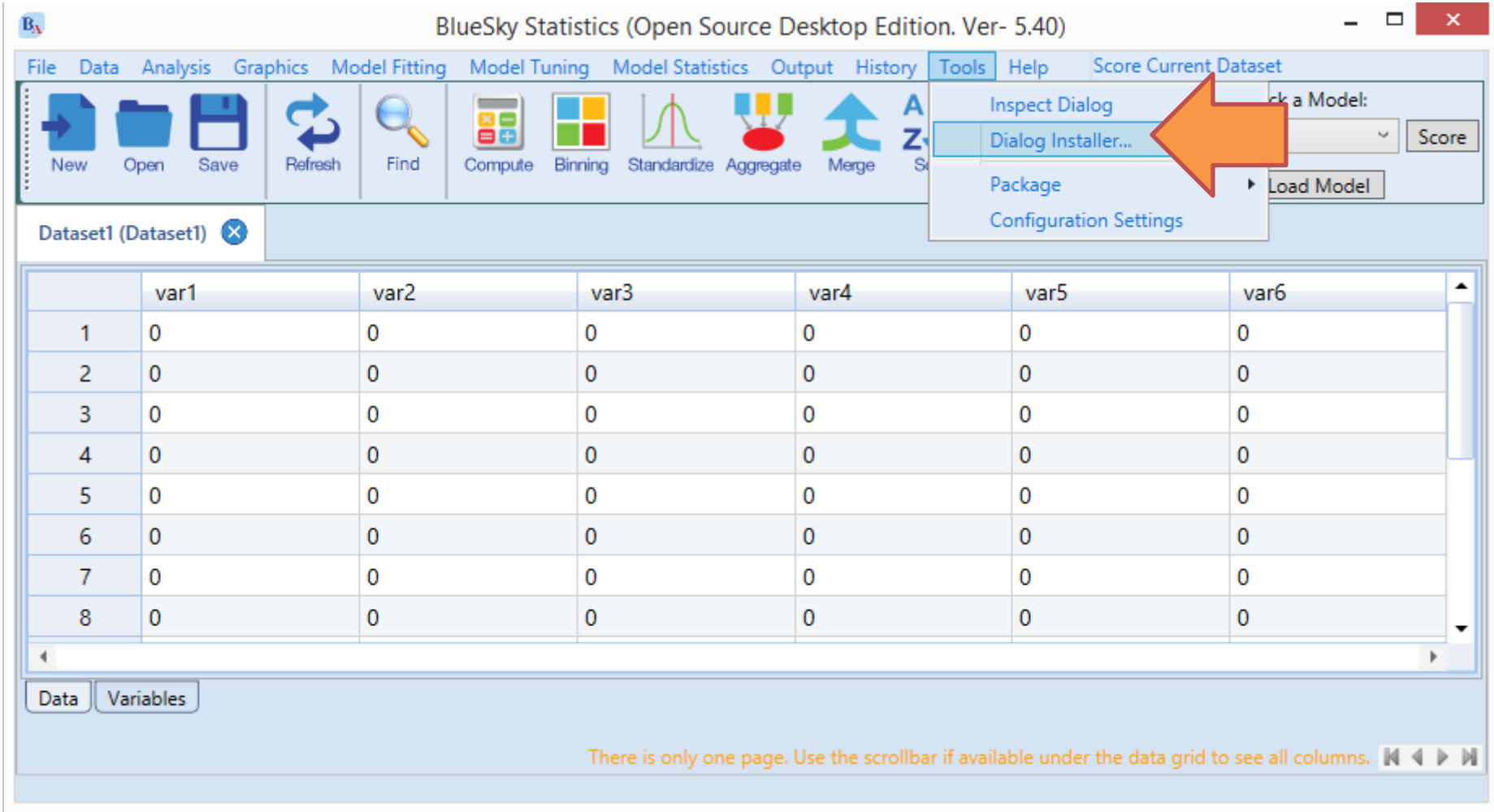


Installing new dialog(s) in BlueSky Statistics

Steps

- Open BlueSky Statistics dialog installer
- Create a new category (in our screenshots we are creating IRT category)
- Install dialog(s) under this category.
- Close and relaunch BlueSky Statistics for the changes to take effect.

1. Launch BlueSky Statistics. Go to 'Tools -> Dialog Installer', as shown below.

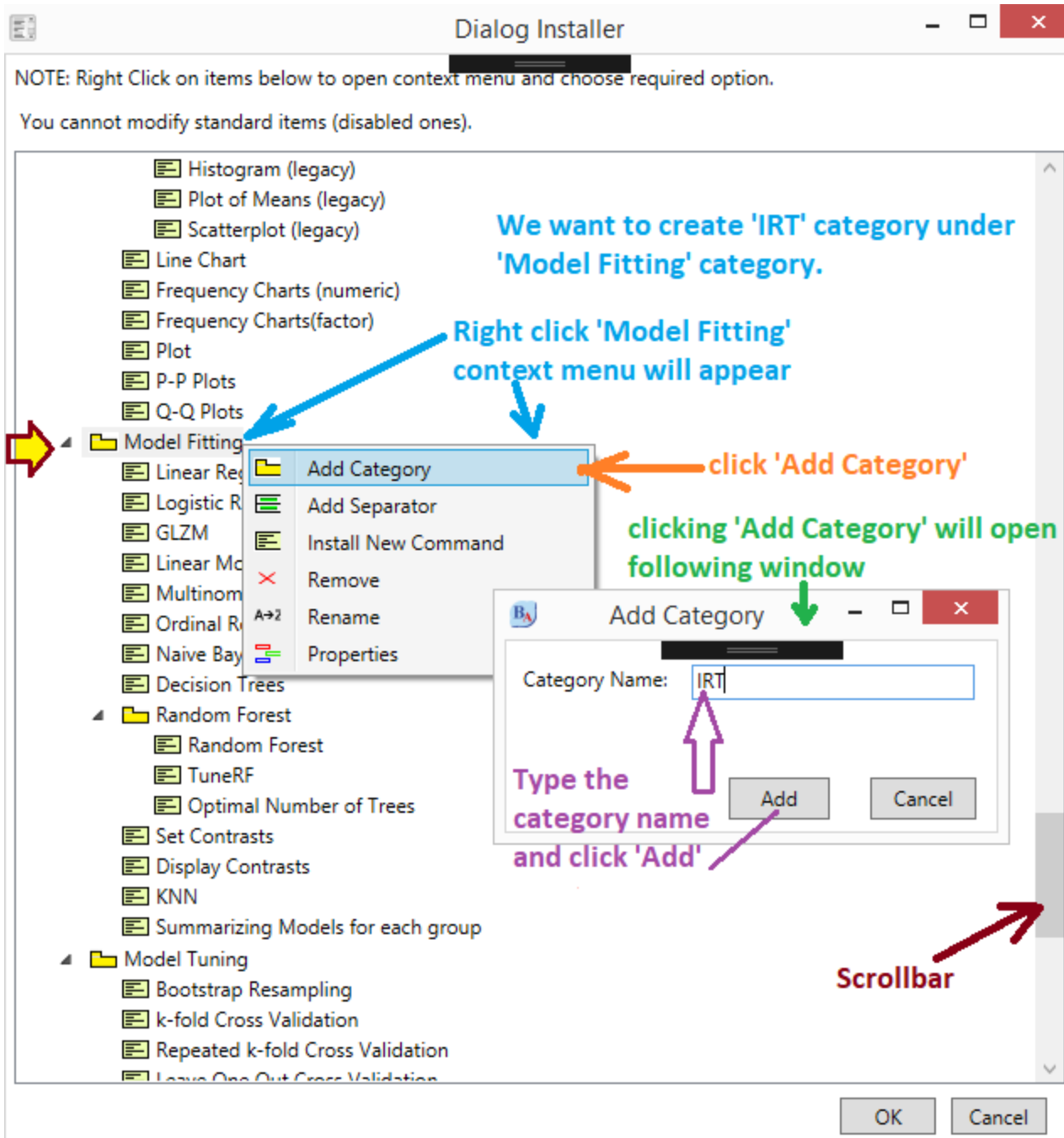


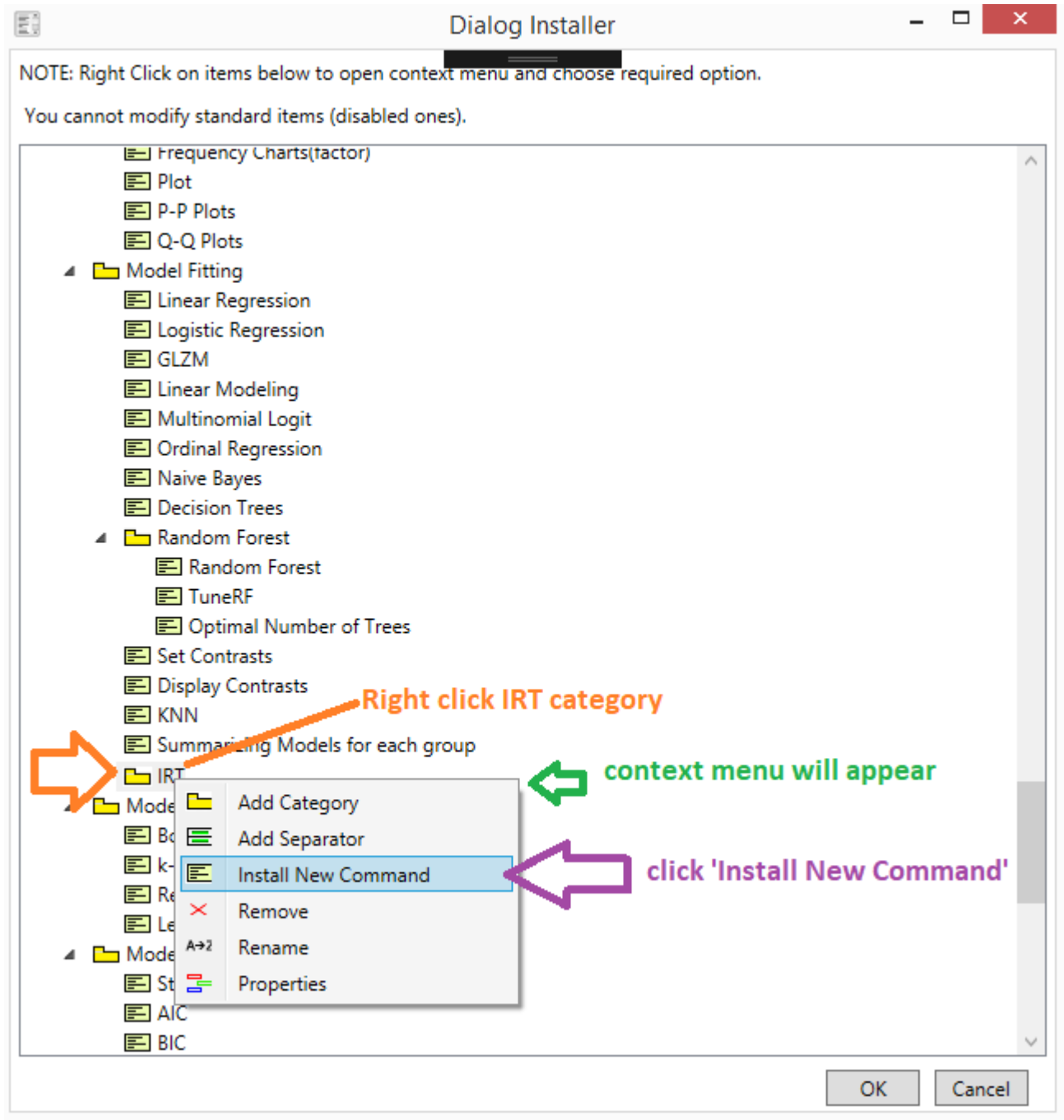
The screenshot shows the BlueSky Statistics (Open Source Desktop Edition, Ver- 5.40) application window. The 'Tools' menu is open, and the 'Dialog Installer...' option is highlighted with an orange arrow. The main window displays a data grid with 8 rows and 6 columns (var1 to var6), all containing the value 0. The interface includes a menu bar, a toolbar with icons for New, Open, Save, Refresh, Find, Compute, Binning, Standardize, Aggregate, Merge, and Score, and a status bar at the bottom with navigation controls.

	var1	var2	var3	var4	var5	var6
1	0	0	0	0	0	0
2	0	0	0	0	0	0
3	0	0	0	0	0	0
4	0	0	0	0	0	0
5	0	0	0	0	0	0
6	0	0	0	0	0	0
7	0	0	0	0	0	0
8	0	0	0	0	0	0

There is only one page. Use the scrollbar if available under the data grid to see all columns.

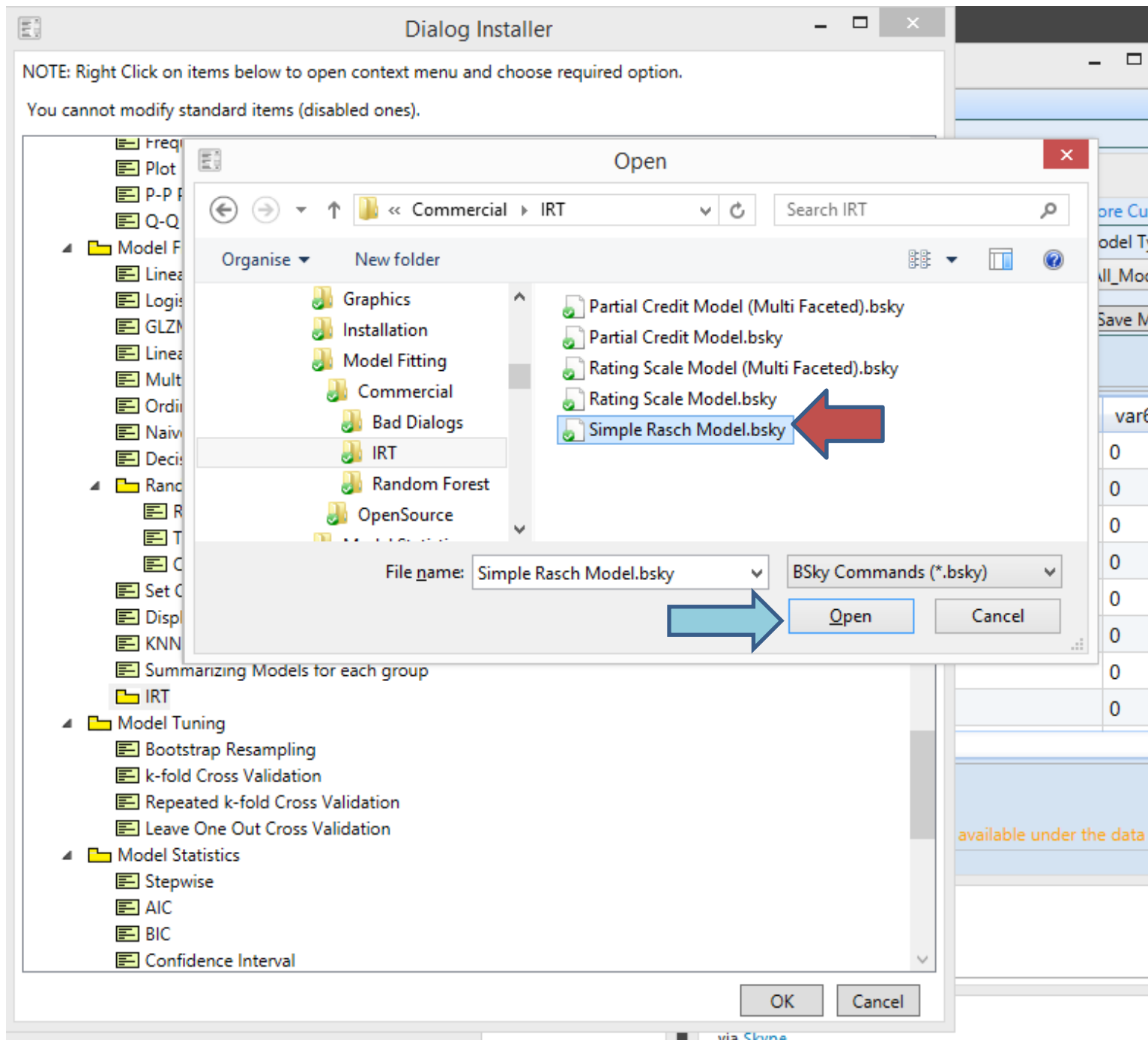
1. In Dialog Installer window, scroll down to locate the 'Model Fitting' category.
2. Right click 'Model Fitting' category and a context menu will appear, now click 'Add Category' from the context menu.
3. 'Add Category' window will appear, type in the desired category name (in the screenshot we typed IRT) and click 'Add' button. See screenshot in the next slide.



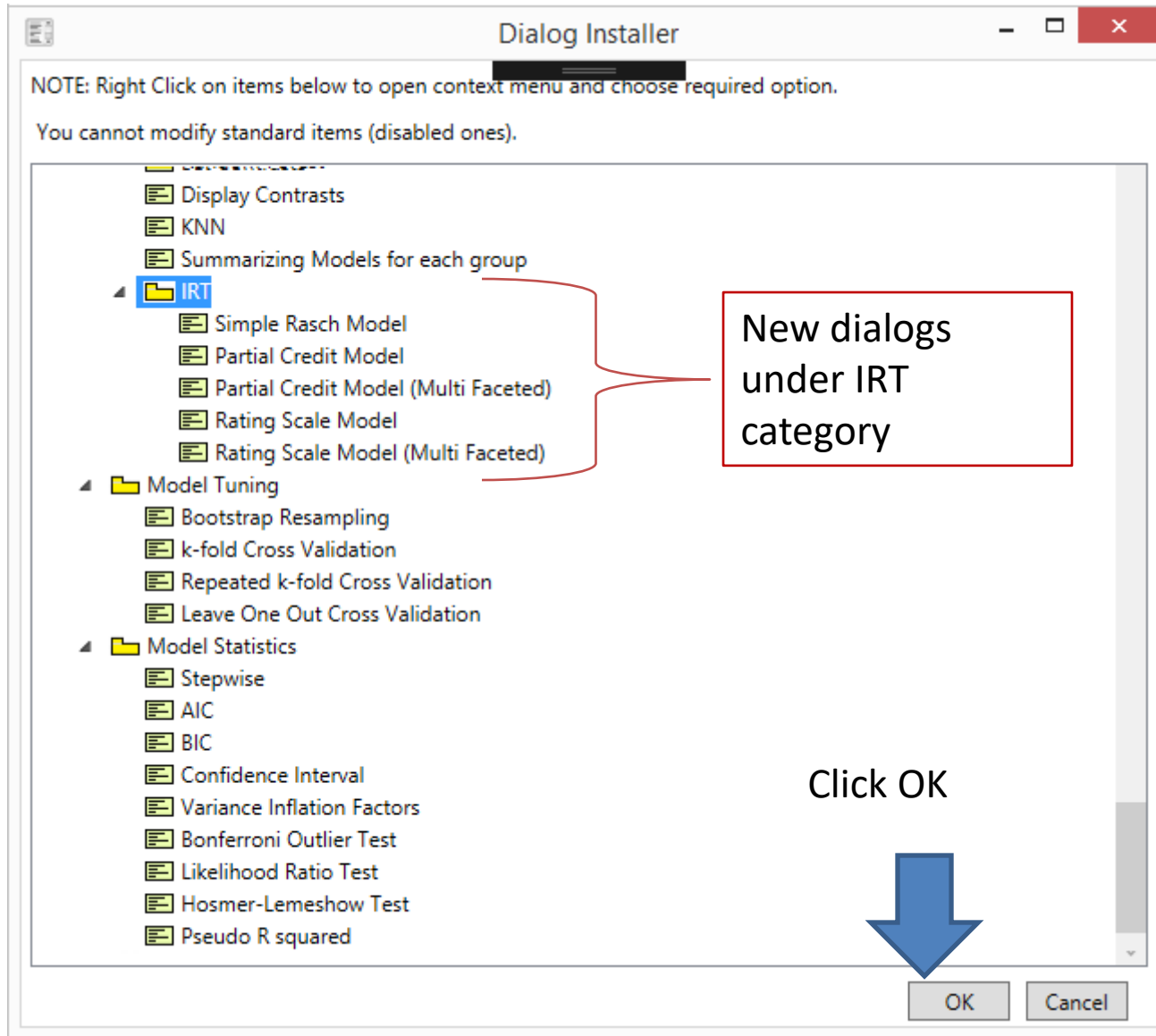


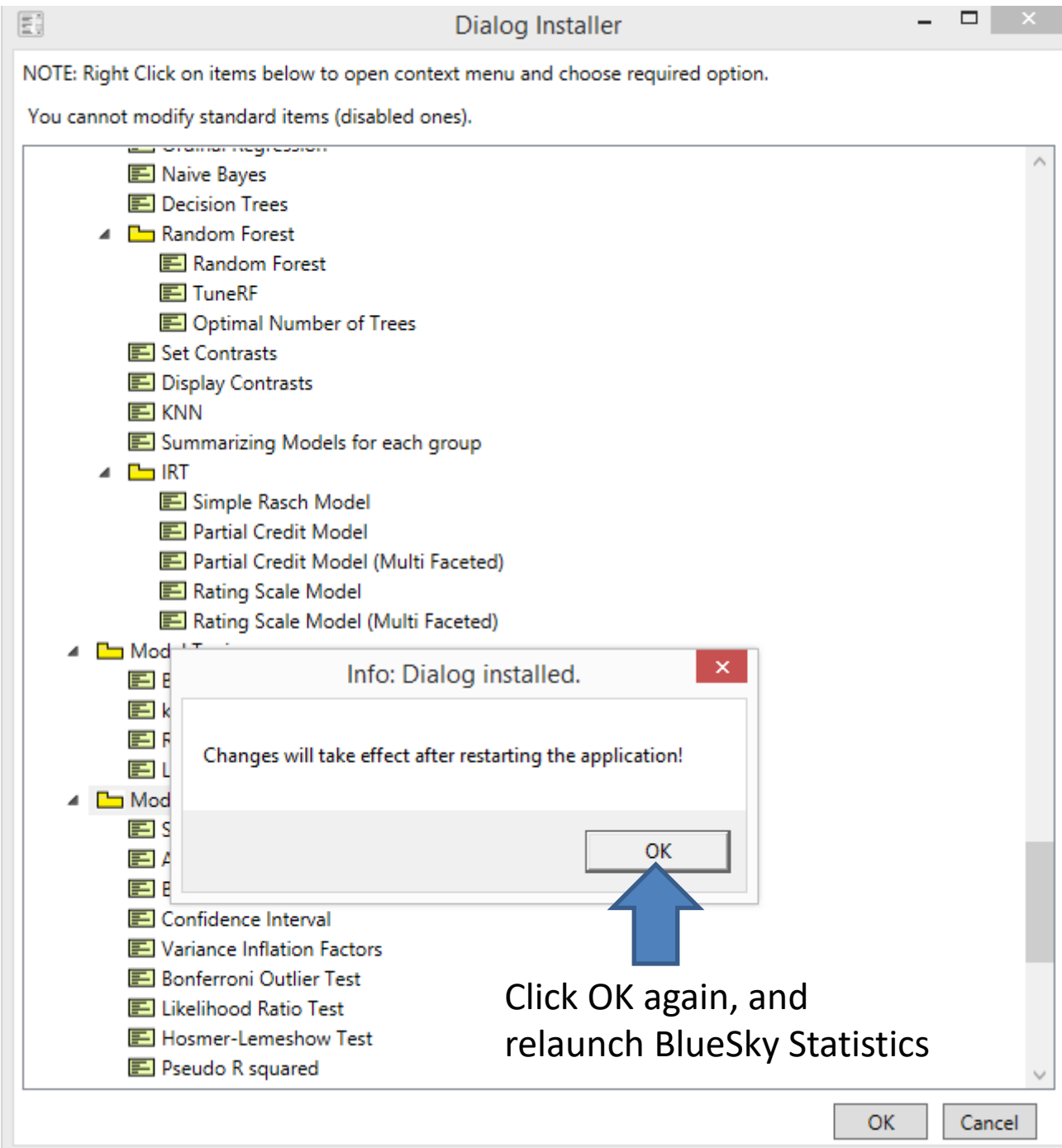
Right click 'IRT' category to install new dialog(s) under it. See screenshot.

Select a dialog file to install it and click 'Open'



Likewise we have installed few dialogs under IRT category. See below.





Thank You.
BlueSky Statistics
support@blueskystatistics.com