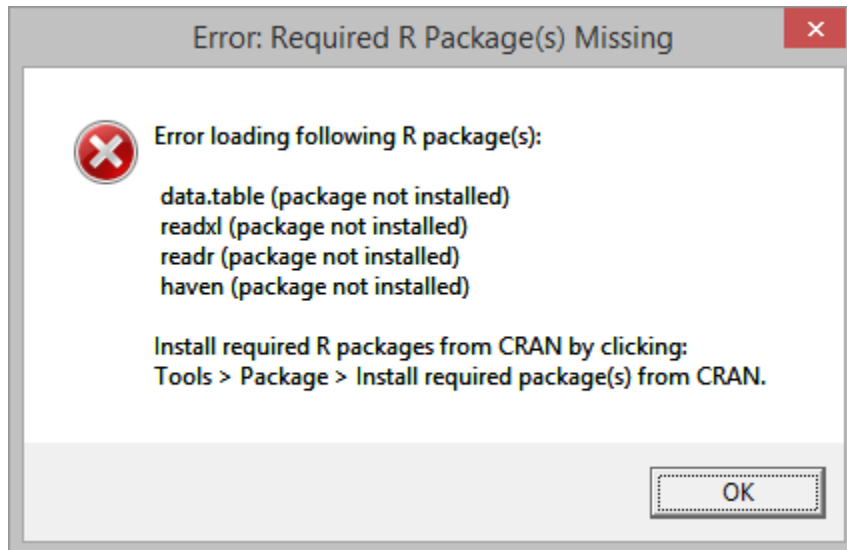


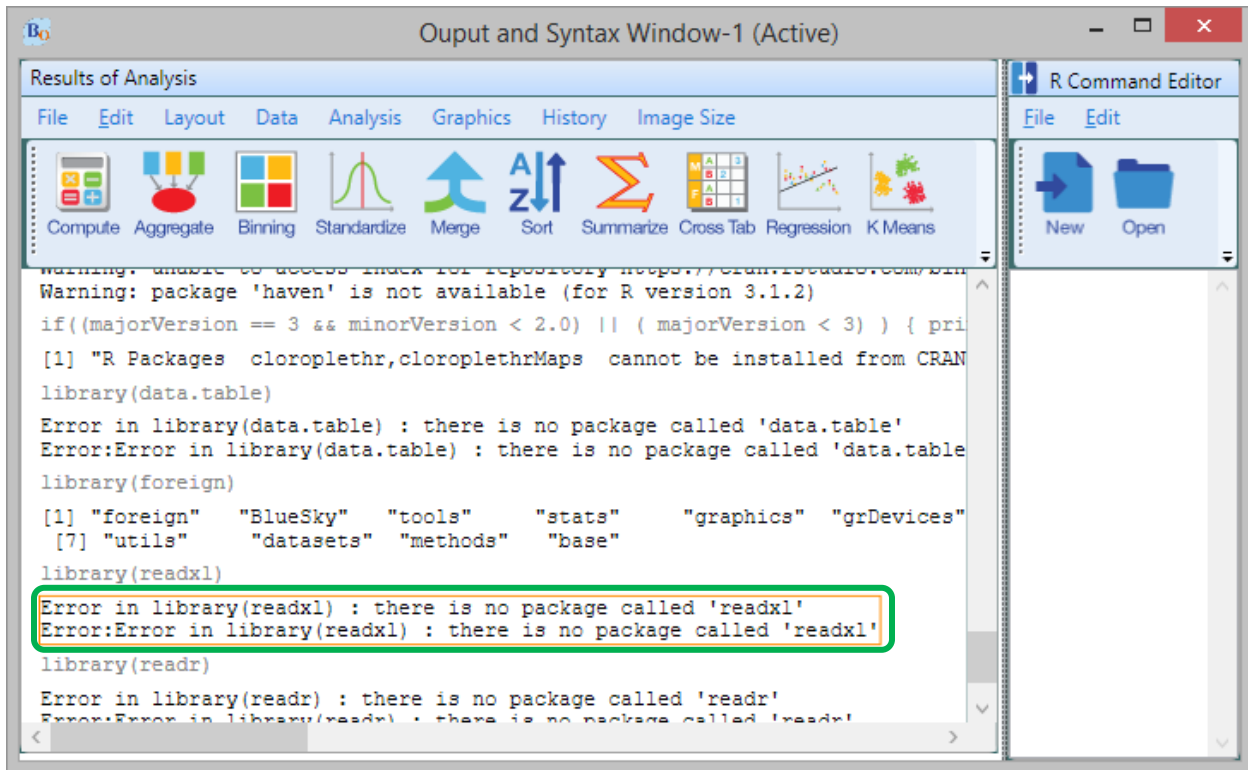
Errors While Installing Required R Packages From CRAN

If you get the following error after launching the BlueSky Statistics application, install the required packages by going to Tools -> **Package** -> **Install required package(s) from CRAN** (as instructed in the message box below)



After you clicked on “Install required packages” as instructed above, examine the results in the output window. If all packages are installed successfully you are done.

If you see one or more error message(s) as the example below for the readxl package (see error enclosed in green), follow the instructions below.



This problem occurs in one of the 2 scenarios:

Case 1:

You have installed the latest version of R, however BlueSky Statistics is pointing to an older version of R. To confirm that this is the case you need to go to

Tools -> Package -> R version details

To Fix this problem you need to follow instructions in section below under heading “**How do you configure the BlueSky Statistics application to use another installed R version**”.

Case 2:

BlueSky Statistics requires version 3.2, if you have older version then you must upgrade.(visit <https://cran.r-project.org/> to get the latest version of R)

How To Check What R Version BlueSky Is Currently Working With ?

To check the R version in use by BlueSky application:

Go to **Tools -> Package -> R version details**

How Do You Configure BlueSky Statistics Application To Use Another Installed R Version ?

Typically the BlueSky Statistics application will point to the latest version of R. However we have seen few instances where BlueSky Statistics points to an older version of R.

To configure BlueSky application to use another installed R version (compatible version), follow these steps:

1. Launch the BlueSky Statistics application. If there is an error that pops up to notify you that R package is missing, ignore the error.
2. Go to **Options -> Configuration Settings**
3. Under a tab named "Path settings" (first tab), there is a field for setting the path to R version of your choice(R version 3.2 or above).
4. To set the path you can copy-paste or use the "Browse" button to locate the R version of your choice.
5. You need to make sure that path should have forward slashes (example : ***C:/Program Files/R/R-3.2.2***). If you copy pasted the path, you must replace you backward slashes to forward slashes.
6. Also, make sure you are pointing to the correct subfolder (and not going very deep or shallow in a directory tree. The last subfolder in your path should be the parent of the "bin" folder.
7. Now click "Apply" to save changes and to close the settings dialog.
8. Close the BlueSky Statistics application.
9. Relaunch BlueSky Statistics application. (ignore message that says missing R package(s))
10. Check R version currently in use by BlueSky Statistics. (**Tools -> Package -> R version details**)
11. Check version details. If it's pointing to the R version of your choice, you can start installing the missing R packages by going to **Tools -> Package -> Install required package(s) from CRAN**.